

SOLUTIONS FOR THE
AEROSPACE INDUSTRY

Conversion software for

ATA Spec2000
ASD S2000M
Replacement
Company Guide
Logistics



MATCONF



SAP
SPEC2000M 2.1 Change 4
ASD S2000M 3.0 Change 1
ASD S2000M 4.0
DBSPEC2000M 2.1 Change 7
ATA SPEC2000
LSA (Mil 1388 / 2B)

warp it AG
Ahornweg 5
84568 Pleiskirchen

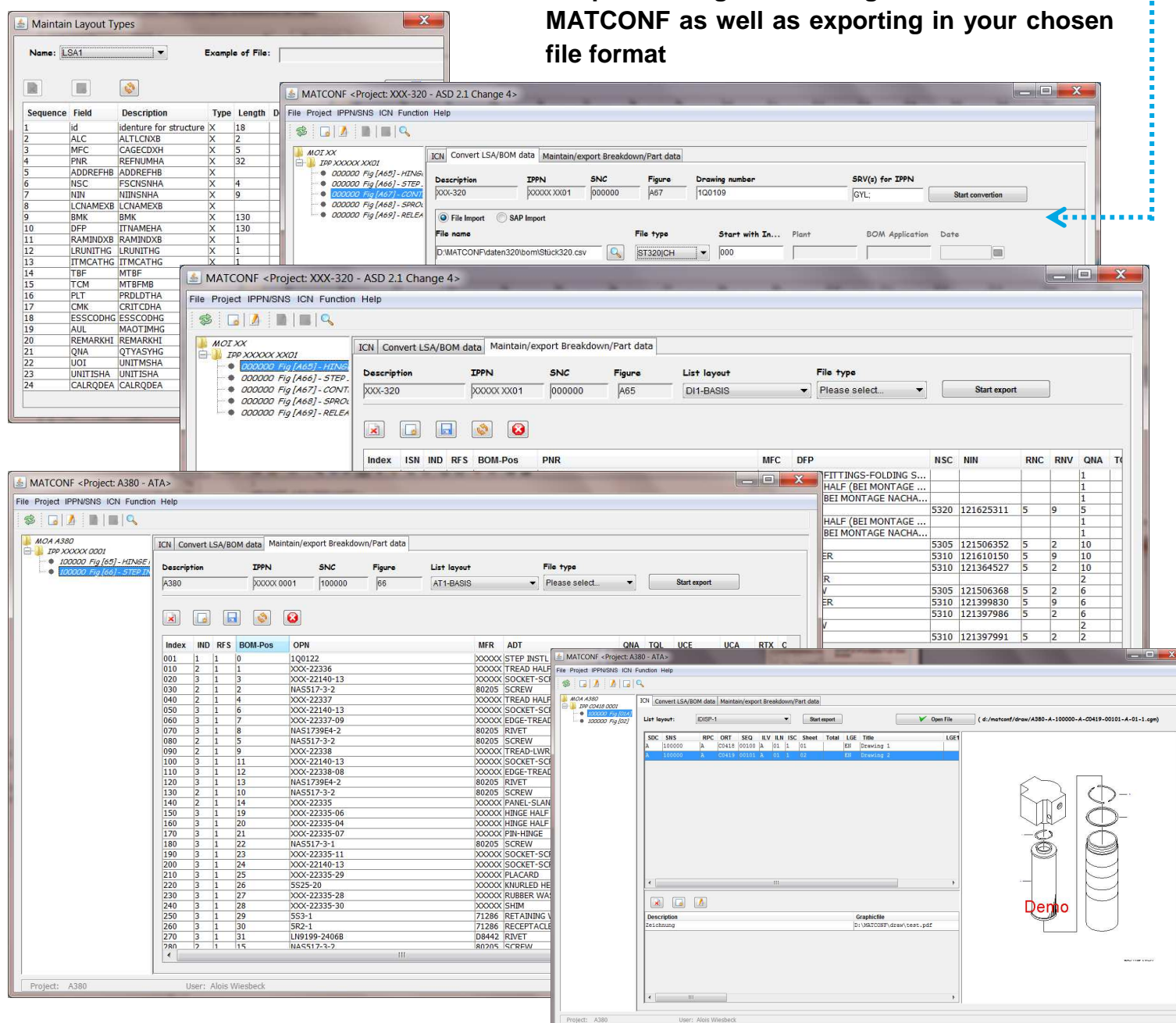
Tel.: 08635 / 6939906
E-Mail: alois.wiesbeck@warp-it.com

MATCONF simplifies daily work with bill of material and engineering drawings!

- ⇒ Data migration from bill of materials and LSA-materials on the basis of project (MOI respectively MOA), IPPN and SNS (Chapter)
- ⇒ Data import from SAP and Files: Data will be converted and supplemented by preassigned values during the import.
- ⇒ Direct loading of data from existing software (e.g. AMOSS/APART) into MATCONF
- ⇒ Adoption/Administration of engineering drawing with ICN preparation.

Graphical User Interface for unique Definition of various File formats!

- ⇒ delimiter-separated, tabulator-separated, fixed length with or without header line
- ⇒ Simple loading and editing of file contents in MATCONF as well as exporting in your chosen file format



Conversion and Rework	Conversion Basics	Our Services
------------------------------	--------------------------	---------------------

Spec2000 data (ASD / ATA)

Replacement catalog

Material disposition

Comparison with NATO DVD

Extrapolation of material basics

ICN – Assignment

Project specific preparation of ICN

ICN – DB Administration

Bill of material

Engineering data

SAP – material master data

Parts catalog (GAPI)

Spec2000 data (ASD / ATA)

LSA – data

Engineering drawing

Graphics

On-site software installation

- Setting up data fields
- Data definition
- ICN – Numbering
- Import / Export of data

Employee training

Interface programming to connect to your software

Additionally: Formulation and preparation of the complete scope of work for a project